

BASIC DETAILS

46107--THE PUPIL SAVEETHA ECO SCH SENEERKUPPAM CHENNAI

Dated : 15-12-2016

SCHOOL NAME	THE PUPIL SAVEETHA ECO SCH SENEERKUPPAM CHENNAI	SCHOOL CODE	46107
ADDRESS	THE PUPIL SAVEETHA ECO SCHOOL,4/68 THIRUVERKKADU ROAD,SENEERKUPPAM POONAMALLEE	AFFILIATION CODE	1930424
PRINCIPAL	MRS DOLLY MOHAN	PRINCIPAL'S CONTACT NUMBER	9444748005
PRINCIPAL'S EMAIL ID	dolly.mohan@ymail.com	PRINCIPAL'S RETIREMENT DATE	27/01/2030
SCHOOL'S CONTACT NUMBER	044-26802014	SCHOOL'S EMAIL ID	thepupiladmin@thepupil.in
SCHOOL'S WEBSITE	www.thepupil.in	SCHOOL'S FAX NUMBER	04426800092
LANDMARK NEAR SCHOOL	saveetha Dental College	YEAR OF ESTABLISHMENT	2012
AFFILIATION VALIDITY	2015 TO 2018	AFFILIATION STATUS	PROVISIONAL
NAME OF THE TRUST/SOCIETY /COMPANY REGISTERED WITH	Saveetha Medical and Educational Trust	REGISTRATION DATE	06/05/1986
SOCIETY REGISTRATION NUMBER	27/1986	REGISTRATION VALIDITY	PERMANENT REGISTRATION
NOC ISSUING AUTHORITY	government of Tamilnadu	NOC ISSUING DATE	29/06/2012
NO OBJECTION CERTIFICATE	VIEW (PdfHandler.aspx?FileName=G:\cbse \2016\schdetails\noc\46107.PDF)	NON PROPRIETY CHARACTER AFFIDAVIT/NON PROFIT COMPANY AFFIDAVIT	VIEW (PdfHandler.aspx?FileName=G: \2016\schdetails\affidavit \46107.PDF)

FACULTY DETAILS

46107--THE PUPIL SAVEETHA ECO SCH SENEERKUPPAM CHENNAI

Dated : 15-12-2016

TOTAL NUMBER OF TEACHERS (ALL CLASSES)	72	NUMBER OF PGTs	15
NUMBER OF TGTs	11	NUMBER OF PRTs	38
NUMBER OF PETs	8	OTHER NON-TEACHING STAFF	26
NUMBER OF MANDATORY TRAINING QUALIFIED TEACHERS	74	NUMBER OF TRAININGS ATTENDED BY FACULTY SINCE LAST YEAR	10

STUDENT DETAILS

46107--THE PUPIL SAVEETHA ECO SCH SENEERKUPPAM CHENNAI

Dated : 15-12-2016

CLASS	TOTAL NUMBER OF SECTIONS	TOTAL NUMBER OF INTAKE	TOTAL NUMBER OF STUDENTS
1	4	200	200
2	4	200	196
3	4	200	179
4	4	200	112
5	3	150	100
6	2	100	79
7	2	100	63
8	1	50	44
9	1	50	51
10	1	50	36
11	2	100	58
12	1	50	8

STUDENT DETAILS46107--THE PUPIL SAVEETHA ECO SCH SENEERKUPPAM CHENNAI
Dated : 15-12-2016

CLASS	TOTAL NUMBER OF SECTIONS	TOTAL NUMBER OF INTAKE	TOTAL NUMBER OF STUDENTS
1	4	200	200
2	4	200	196
3	4	200	179
4	4	200	112
5	3	150	100
6	2	100	79
7	2	100	63
8	1	50	44
9	1	50	51
10	1	50	36
11	2	100	58
12	1	50	8

ACADEMIC DETAILS

46107--THE PUPIL SAVEETHA ECO SCH SENEERKUPPAM CHENNAI
Dated : 15-12-2016

SUBJECTS OFFERED FOR CLASS 10

006---TAMIL
018---FRENCH
041---MATHEMATICS
085---HINDI COURSE-B
086---SCIENCE
087---SOCIAL SCIENCE
184---ENGLISH LNG & LIT.

SUBJECTS OFFERED FOR CLASS 12

001---ENGLISH ELECTIVE-N
002---HINDI ELECTIVE
030---ECONOMICS
041---MATHEMATICS
042---PHYSICS
043---CHEMISTRY
044---BIOLOGY
048---PHYSICAL EDUCATION
054---BUSINESS STUDIES
055---ACCOUNTANCY
066---ENTREPRENEURSHIP
083---COMPUTER SCIENCE
101---ENGLISH ELECTIVE-C
301---ENGLISH CORE
302---HINDI CORE

INFRASTRUCTURE DETAILS46107--THE PUPIL SAVEETHA ECO SCH SENEERKUPPAM CHENNAI
Dated : 15-12-2016

TOTAL NUMBER OF SITES OF SCHOOL	1	TOTAL NUMBER OF BUILDING BLOCKS	1
TOTAL AREA OF SCHOOL IN SQUARE METRES	8700	TOTAL NUMBER OF PLAYGROUNDS	3
TOTAL AREA OF PLAYGROUND IN SQUARE METRES	6245	TOTAL NUMBER OF ROOMS	80
TOTAL NUMBER OF SMALL-SIZED ROOMS	7	TOTAL NUMBER OF MEDIUM-SIZED ROOMS	64
TOTAL NUMBER OF LARGE-SIZED ROOMS	9	TOTAL NUMBER OF MALE REST ROOM	31
TOTAL NUMBER OF FEMALE REST ROOM	23	NUMBER OF GIRLS' TOILET	23
NUMBER OF BOYS' TOILET	31	NUMBER OF TOILETS FOR DIFFERENTLY ABLED PERSONS	5
NUMBER OF WASHROOMS FOR FEMALE STAFF	5	NUMBER OF WASHROOMS FOR MALE STAFF	4
TOTAL NUMBER OF LIBRARIES	1	NUMBER OF LABORATORIES	7
TOTAL NUMBER OF STUDENT CANTEENS	1	TOTAL NUMBER OF STAFF CANTEENS	1

NUMBER OF WATER PURIFIERS/ROs 1

NUMBER OF LIFTS/ELEVATORS 1

DOES THE SCHOOL HAS HOSTEL FACILITY NO

DOES THE SCHOOL HAS FIRE EXTINGUISHERS YES

DOES THE SCHOOL HAS CCTV CAMERAS INSTALLED? YES

TOTAL NUMBER OF COMPUTERS IN ALL COMPUTER LAB 136

DOES THE SCHOOL HAS A BOUNDARY WALL? YES

DOES THE SCHOOL HAS CLINIC FACILITY? YES

DOES THE SCHOOL HAS A GYMNASIUM? YES

PROVISION OF WEB BASED LEARNING PROGRAMS? YES

NUMBER OF AUDITORIUMS 2

NUMBER OF DIGITAL CLASSROOMS 64

DOES THE SCHOOL HAS GUARDS EMPLOYED FOR SAFETY YES

DOES THE SCHOOL HAS SPRINKLERS YES

IS THE SCHOOL EXAMINATION CENTER OF CBSE? YES

DOES THE SCHOOL HAS WEB SERVERS YES

IS YOUR SCHOOL BARRIER FREE/ HAS RAMPS? YES

DOES THE SCHOOL HAS A STRONG ROOM? YES

IS YOUR SCHOOL WI-FI ENABLED? YES

DOES THE SCHOOL HAS FIRE ALARMS? YES

DOES THE SCHOOL HAS SPORTS FACILITY?	YES	DOES THE SCHOOL HAS INDOOR GAMES FACILITY?	YES
DOES THE SCHOOL HAS A SWIMMING POOL?	YES	DOES THE SCHOOL HAS DANCE/MUSIC FACILITY?	YES
TOTAL NUMBER OF BUSES OWNED	0	TOTAL NUMBER OF BUSES HIRED	0
TOTAL NUMBER OF VANS/MATADORS	0	TOTAL NUMBER OF DRIVERS	0
NUMBER OF FEMALE ATTENDANTS FOR BUS DUTY	0	NUMBER OF ACTIVITY ROOMS	8
NAME OF TRANSPORT COORDINATOR	NA	TRANSPORT COORDINATOR CONTACT	0
BUILDING SAFETY CERTIFICATE	VIEW (PdfHandler.aspx?FileName=G:\cbse\2016\schdetails\building\46107.PDF)	TRANSPORT SAFETY CERTIFICATE	VIEW (PdfHandler.aspx?FileName=G\2016\schdetails\NA)

LOCATION DETAILS46107--THE PUPIL SAVEETHA ECO SCH SENEERKUPPAM CHENNAI
Dated : 15-12-2016

NEAREST NATIONALISED BANK	INDIAN BANK	DISTANCE OF BANK FROM SCHOOL IN KM	3
NEAREST BUS STATION	THIRUVERKADU	DISTANCE OF BUS TERMINAL FROM SCHOOL IN KM	2
NEAREST RAILWAY STATION	AVADI	DISTANCE OF RAILWAY STATION FROM SCHOOL IN KM	8
NEAREST AIRPORT	CHENNAI	DISTANCE OF AIRPORT FROM SCHOOL IN KM	12
NEAREST HOSPITAL	SAVEETHA DENTAL COLLEGE HOSPITAL	DISTANCE OF HOSPITAL FROM SCHOOL IN KM	1
NEAREST POLICE STATION	THIRUVERKADU	DISTANCE OF POLICE STATION FROM SCHOOL IN KM	2
NEAREST METRO STATION	KOYEMBEDU	DISTANCE OF METRO FROM SCHOOL IN KM	8

OTHER VITAL INFORMATION

46107--THE PUPIL SAVEETHA ECO SCH SENEERKUPPAM CHENNAI
Dated : 15-12-2016

10th BOARD PASS PERCENTAGE (2014/2015/2016)	0/100/100	12th BOARD PASS PERCENTAGE (2014/2015/2016)	0/0/0
NAME OF WELLNESS/ACTIVITY TEACHER	YES	NAME OF GRIEVANCE/COMPLAINT REDRESSAL OFFICER	DOLLY MOHAN
CONTACT NUMBER OF GRIEVANCE/COMPLAINT REDRESSAL OFFICER	9444748005	EMAIL ID OF GRIEVANCE/COMPLAINT REDRESSAL OFFICER	dolly.mohan@yr
NAME OF HEAD OF SEXUAL HARASSMENT COMMITTEE	BRINDA	CONTACT NUMBER OF HEAD OF SEXUAL HARASSMENT COMMITTEE	04426802013
EMAIL ID OF HEAD OF SEXUAL HARASSMENT COMMITTEE	hr@thepupil.in	NAME OF CONTACT PERSON IN CASE OF EMERGENCY	DOLLY MOHAN
CONTACT NUMBER OF CONTACT PERSON IN CASE OF EMERGENCY	9444748005	EMAIL ID OF CONTACT PERSON IN CASE OF EMERGENCY	dolly.mohan@yr
TOTAL NUMBER OF DOCTORS IN SCHOOL CLINIC	1	TOTAL NUMBER OF NURSES IN SCHOOL CLINIC	1
TOTAL NUMBER OF BEDS IN SCHOOL CLINIC	2	LEVEL OF INVOLVEMENT OF SCHOOL IN CBSE ACTIVITIES	ACTIVE
DO THE TEACHERS GET PROPER GRADE LIKE PGT/TGT AS PER THE CLASSES THEY ARE ENTITLED TO TEACH?	YES	DO THE TEACHERS AND STAFF GET THEIR SALARY WITHIN FIRST WEEK OF THE MONTH?	YES
DOES THE SCHOOL HAS EPF FACILITY FOR STAFF	YES	EPF REGISTRATION NUMBER	TN/AMB/69146
MODE OF SALARY PAYMENT	bankpayment	NAME OF BANK WITH SALARY ACCOUNT	CITY UNION BAN

ARE THE SCHOOL ACCOUNTS AUDITED REGULARLY?	YES	PARENT TEACHERS ASSOCIATION AS PER NORMS	YES
ACADEMIC SESSION	APRIL TO MARCH	VACATION PERIOD	APRIL TO JUNE
AUDITED BALANCE SHEET OF SCHOOL	VIEW (PdfHandler.aspx?FileName=G:\cbse\2016\schdetails\balance\46107.pdf)	STAFF STATEMENT OF SCHOOL	VIEW (PdfHandler.aspx?FileName=G:\cbse\2016\schdetails\staff\46107.pdf)
INCOME AND EXPENDITURE STATEMENT	VIEW (PdfHandler.aspx?FileName=G:\cbse\2016\schdetails\income\46107.pdf)	ACADEMIC CALENDAR OF SCHOOL	VIEW (PdfHandler.aspx?FileName=G:\cbse\2016\schdetails\calendar\46107.pdf)

BEST PRACTICES OF SCHOOL

1. BI MONTHLY STAFF DEVELOPMENT PROGRAMS 2. COMPUTER SCIENCE INTRODUCED FROM CLASS 1 ONWARDS 3. SCIENCE LAB 5. GYMNASTICS, SWIMMING , YOGA INTEGRATED INTO CURRICULUM

FEE STRUCTURE OF SCHOOL

46107--THE PUPIL SAVEETHA ECO SCH SENEERKUPPAM CHENNAI
Dated : 15-12-2016

CLASS	ADMISSION FEE (in Rupees)	TUITION FEE (in Rupees)	YEARLY DEVELOPMENT CHARGES (in Rupees)	ANNUAL/MONTHLY OTHER CHARGES FOR OTHER FACILITIES (in Rupees)
PRIMARY	0	63000	0	0
MIDDLE	0	64500	0	0
SECONDARY	0	64500	0	0
SENIOR SECONDARY	0	75000	0	0

PHOTO OF SCHOOL

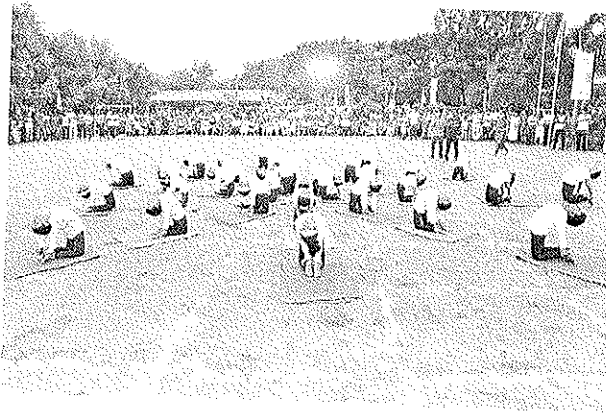
46107--THE PUPIL SAVEETHA ECO SCH SENEERKUPPAM CHENNAI
Dated : 15-12-2016

SCHOOL PHOTOS

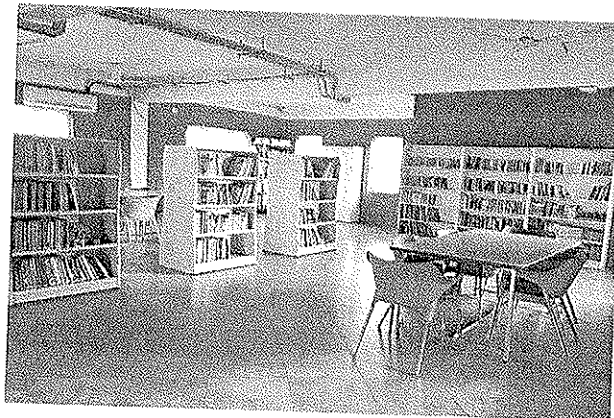
GEO-TAGGED PHOTO



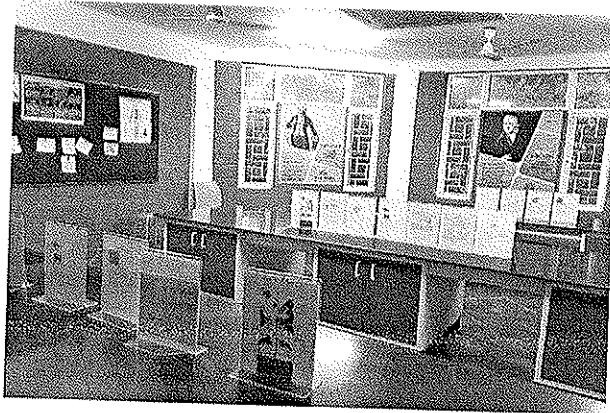
PLAYGROUND PHOTO



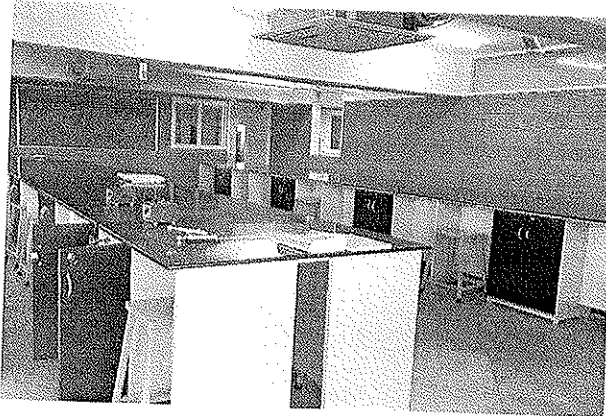
LIBRARY PHOTO



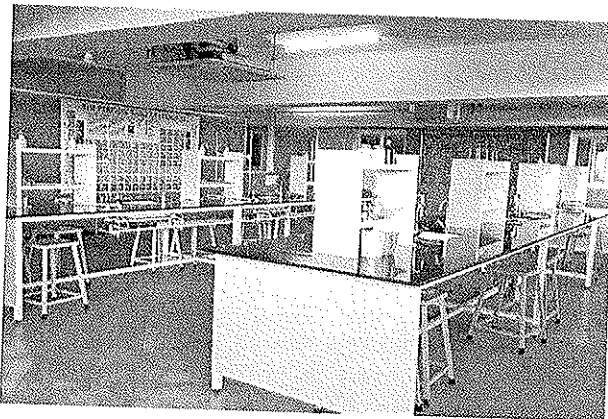
SCIENCE LAB PHOTO



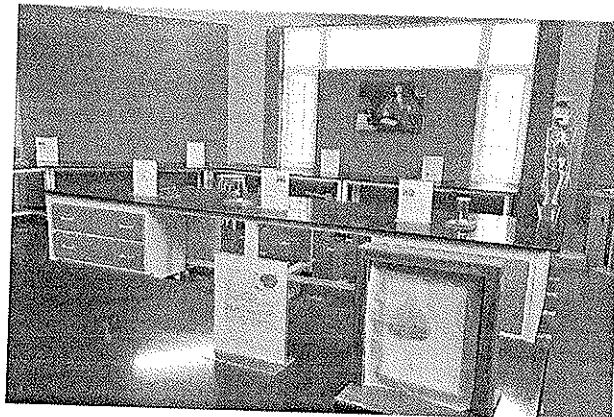
PHYSICS LAB PHOTO



CHEMISTRY LAB PHOTO



BIOLOGY LAB PHOTO



Copyright © 2016 CBSE (login.aspx). All rights reserved.